



# Exploring the Value of Adopting GIS Solutions for Campus Operations

Prepared for OCFMA

June 14, 2021



Platinum member

# Introductions



**Iain Greensmith**  
Esri Canada



**Samuel Adanyi**  
Fanshawe College

# Agenda

- Value Proposition for GIS on campus
- GIS Use Cases for Campus Operations
- Case Study: Fanshawe College



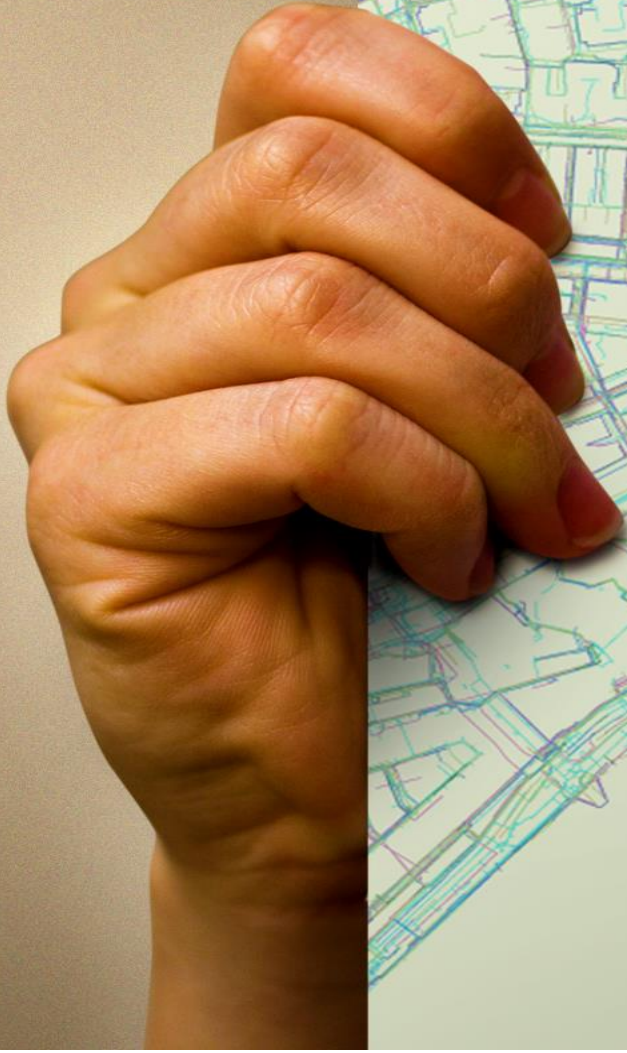


## Key takeaways from video

- **GIS is the common glue to bring together multiple business systems and remove data silos**
  - **Access to data by all staff**
  - **Configurable apps that can be redeployed for different uses**
    - **Field data collection**
    - **Work order coordination**

*“At the heart of all of this decision making...is data that we can manage, report, visualize, and manipulate through GIS”*

*Brian Swanson – AVP and CFO, University Services, University of Minnesota*



**80%**  
of data has a  
spatial component



**65%**  
of people are  
visual thinkers



**Why GIS?**

Spatial + Visual

# GIS: *The foundation of a Digital Twin*



- The ability to structure and organize data that allows us to create a scale model of the real world
- A GIS maps this scale model to help understand assets
- Provides a historical record / baseline
- Operational performance monitoring
- Test against and plan for future outcomes with analytics

Sustainability

Asset Inventory

Transportation networks

Utility networks modeling

Vehicle locations

Return to Campus

Sanitation

Shut-off valves

Space planning

Locates

Work Management

Emergency Management

Capital projects

Building Floor plans

Geo-enabled Document management

Campus Safety

Sensors / IoT

Campus trees



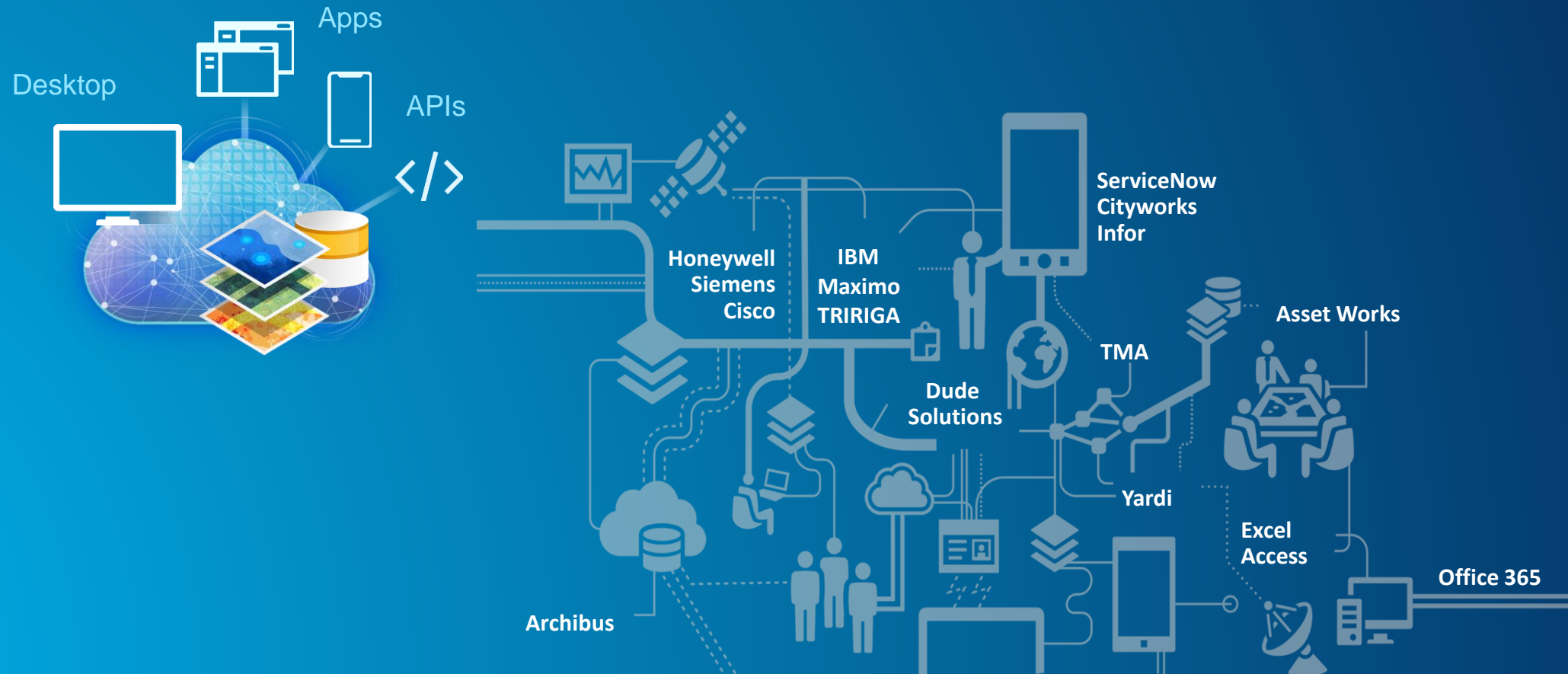


# Integrate Existing Systems

*Extend the benefits of current campus systems*

## *Types of data with our platform and existing systems*

- AVL
- IoT
- Work orders
- CAD
- BIM
- Imagery



# GIS Applications Are Transforming Infrastructure Management

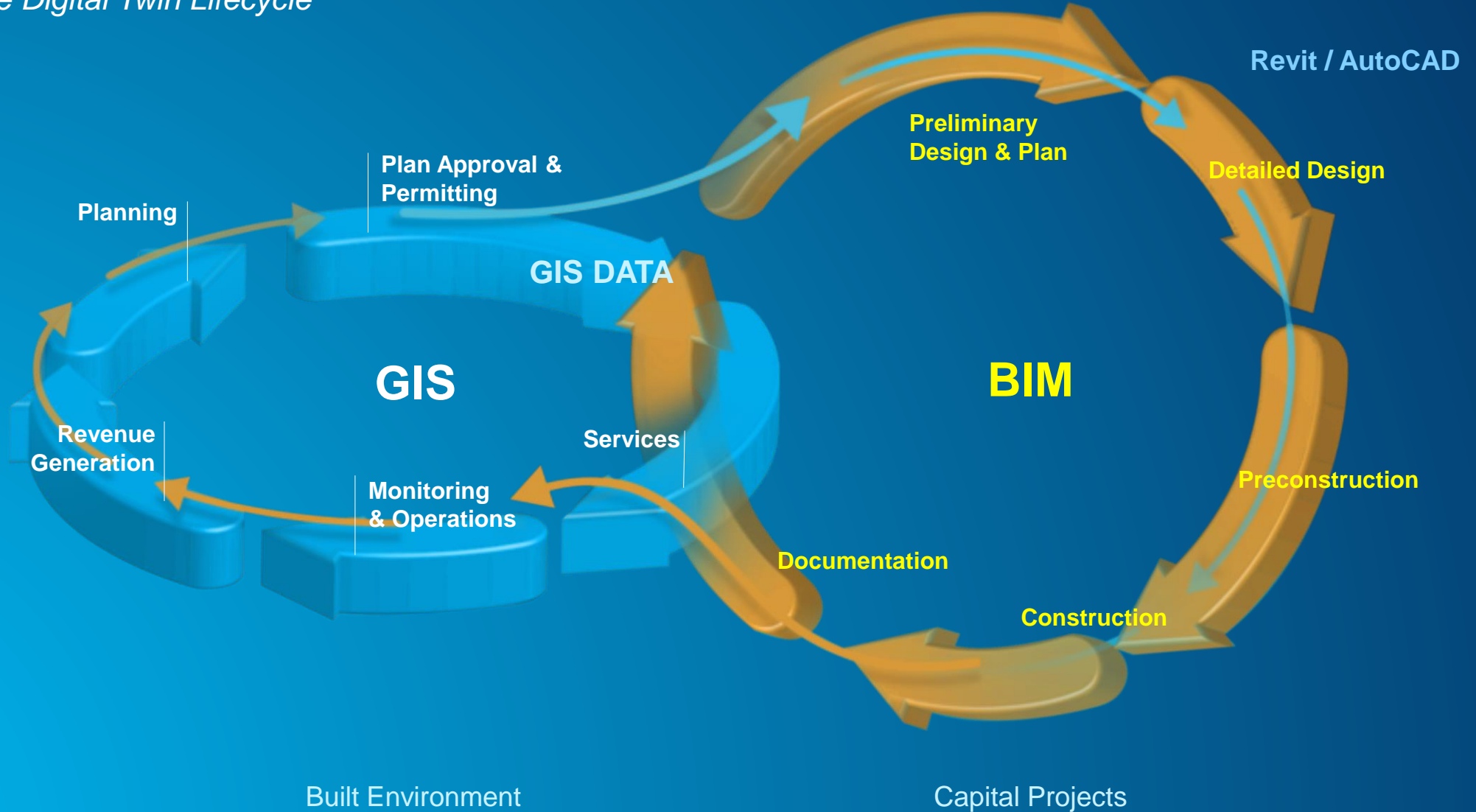
*Supporting Specialized Design and Engineering Workflows*



*Leveraging the Power of GIS . . .  
. . . Data, Analytics and Visualization*

# Integrating GIS & BIM Workflow

*Complete Digital Twin Lifecycle*

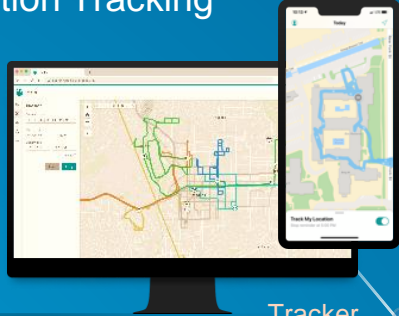


# Integrated Field Operations

Location-Enabling All Aspects of Field Work



Location Tracking



Enterprise and Online

Tracker

Data Capture, Inspections & Surveys

QuickCapture



Lines & Polygons

Survey123

Operational Awareness

Dashboard



Plan & Manage



Workforce



ArcGIS Field Maps



Integrated App



Connecting & Transforming Mobile Workflows  
... in Every Industry

# Utility Network Modeling

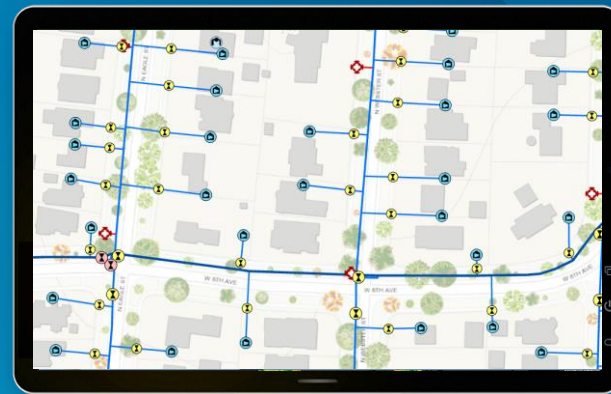
*Creating an Accurate Representation to Address Real-World Modeling*



Distribution,  
Collection, &  
Conveyance

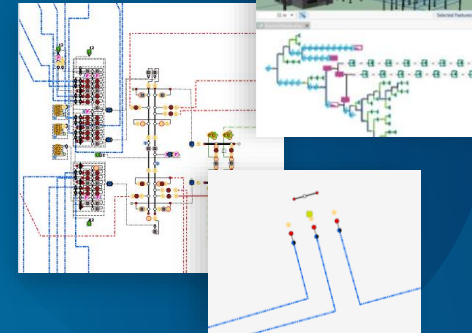


Network  
Controllers



Connectivity

Containment



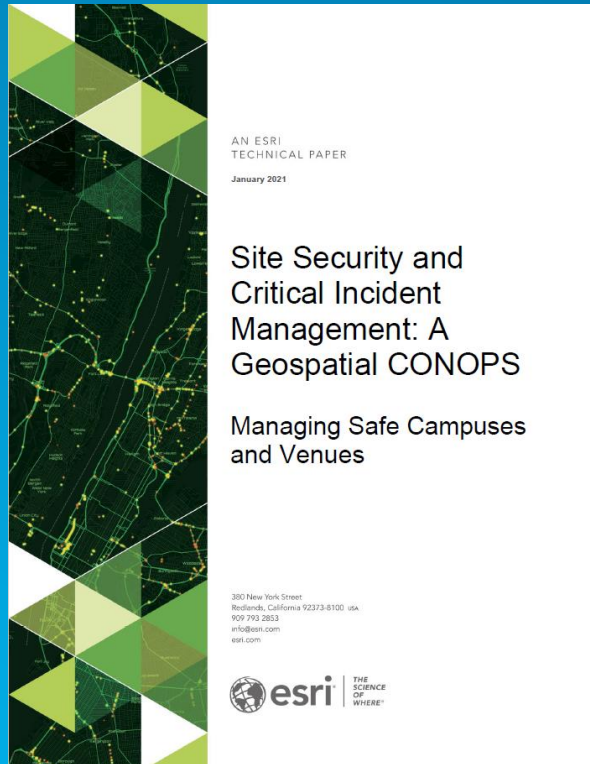
Devices

**Water, Electrical, Gas, and Telecom**

*Model connectivity of assets and business logic*

# Campus and Community Safety

*Geo-enabled solutions for incident management and program planning*



# Indoors

*An Enterprise Mapping System for Operations and Mobility*

GIS for Asset, Space and Building Management . . .  
. . . In a Single System

## Operations

Safety & Security  
Emergency Management  
Problem Reporting  
Asset Management

## Portfolio Management

Buildings  
Infrastructure

## Data Management

System of Record  
CAD / BIM  
Floor Plan Integration

## Wayfinding

Employee Routing  
Indoor Positioning  
Public Kiosk  
Tracking



Floor Plans



3D Maps



## Stakeholders

- Business Owners
- Operators
- Employees
- Visitors



Workplace Analytics



Indoor Positioning



Wayfinding

Location Sharing

# Fanshawe College

Case Study



# Agenda

- Fanshawe GIS Use cases
- General background
- Demo

# Fanshawe Use Cases

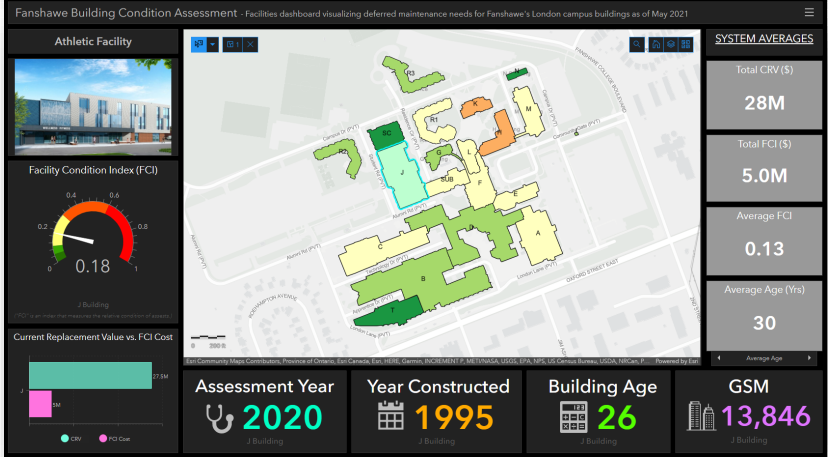
- **Fanshawe Sustainability App**

*An ArcGIS web map designed to showcase sustainability features located on campus*



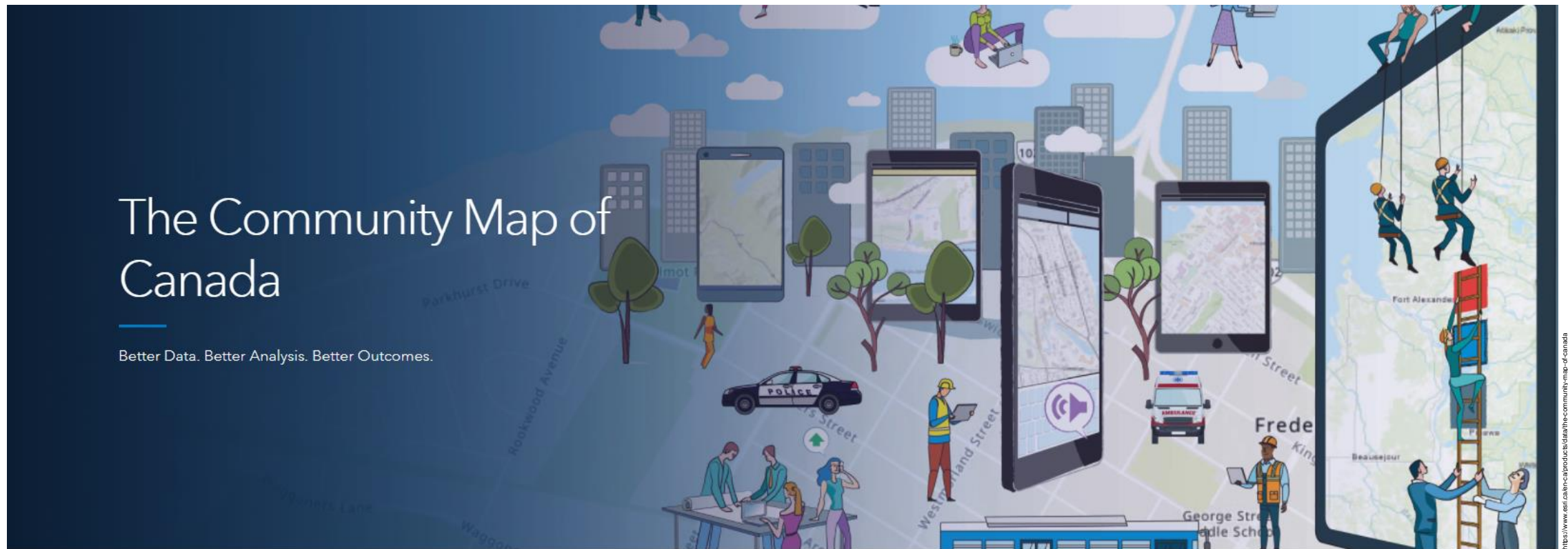
- **Deferred Maintenance Dashboard**

*A Facilities dashboard visualizing deferred maintenance needs for Fanshawe’s London campus buildings*



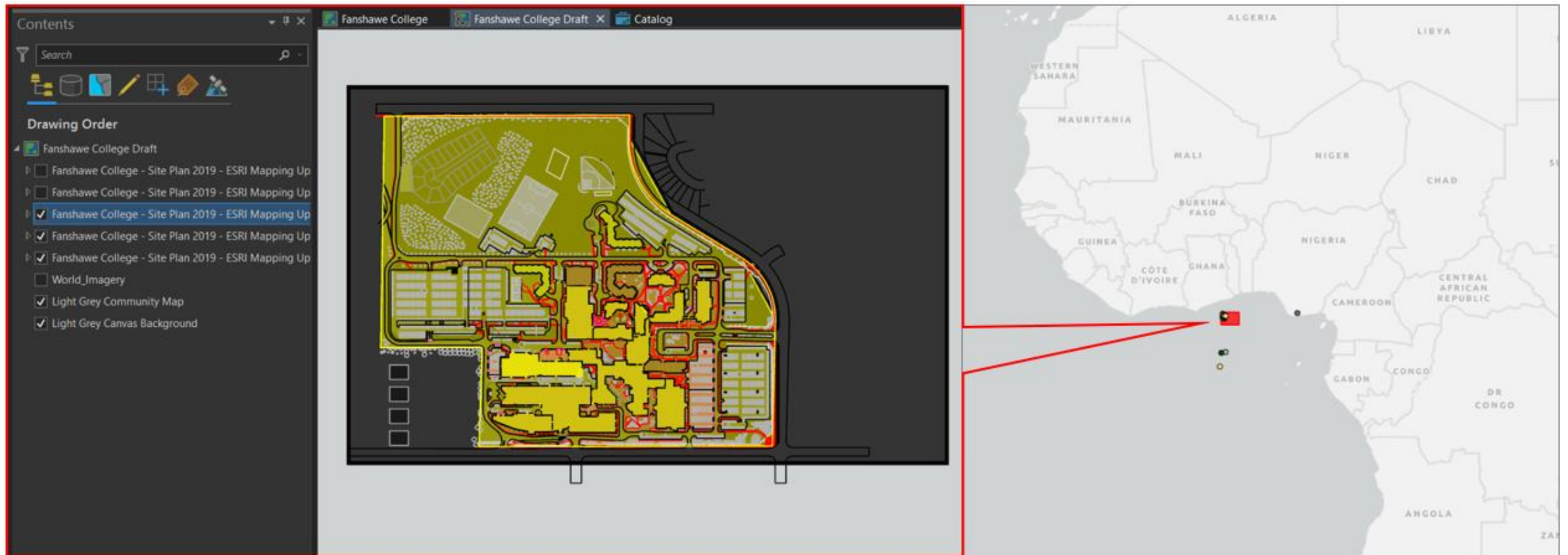
# General Background

- Community Maps of Canada
  - A community driven basemap from authoritative sources



# General Background

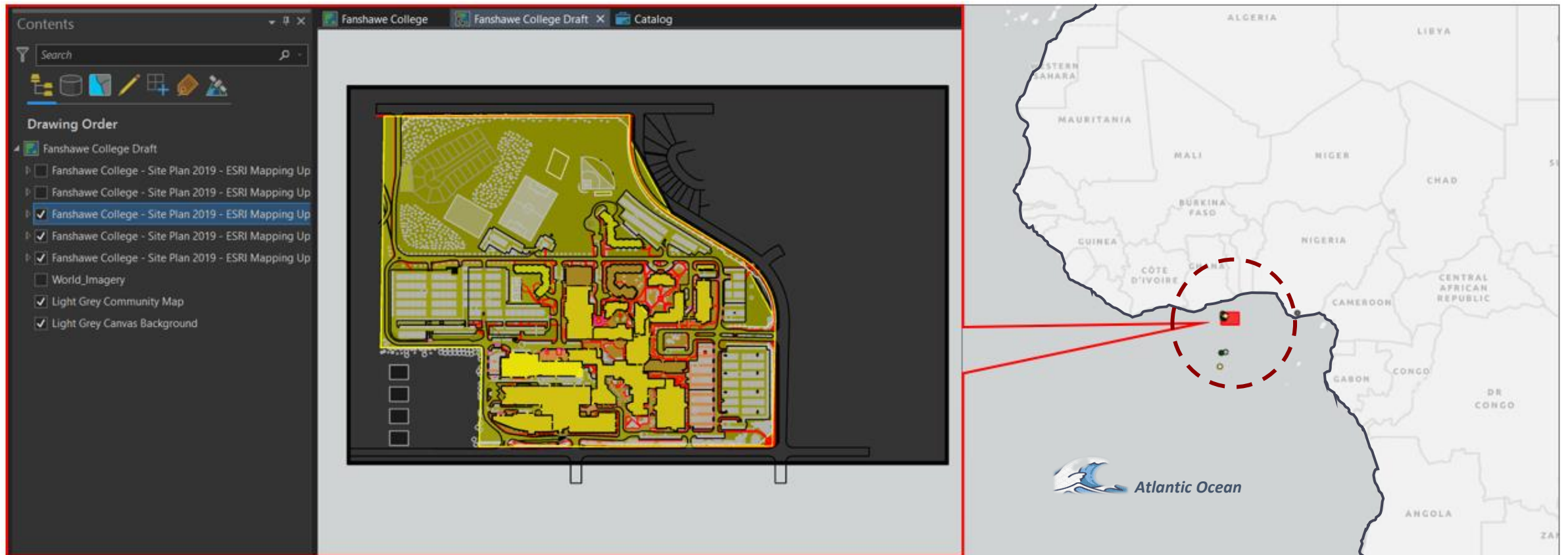
- Leveraging Existing CAD files
  - *AutoCAD layers were used to generate shapefiles*



• *CAD Data Before Georeferencing*

# General Background

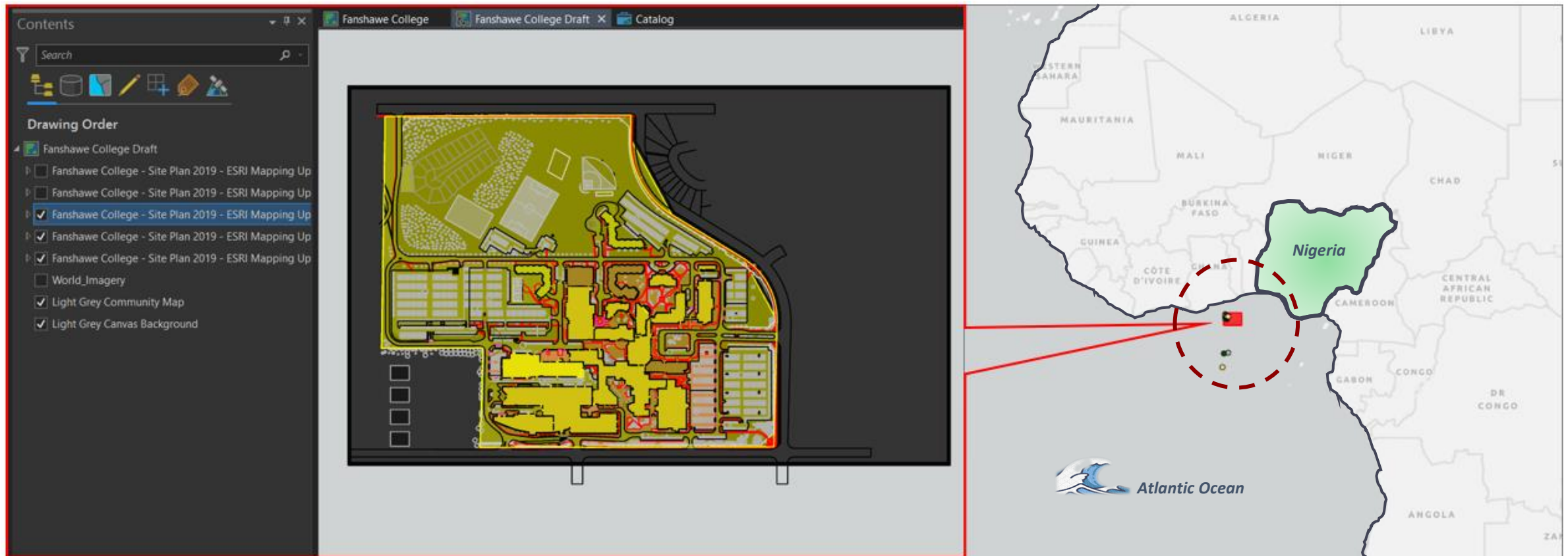
- Leveraging Existing CAD files
  - *AutoCAD layers were used to generate shapefiles*



- *CAD Data Before Georeferencing*

# General Background

- Leveraging Existing CAD files
  - *AutoCAD layers were used to generate shapefiles*



- *CAD Data Before Georeferencing*

# General Background

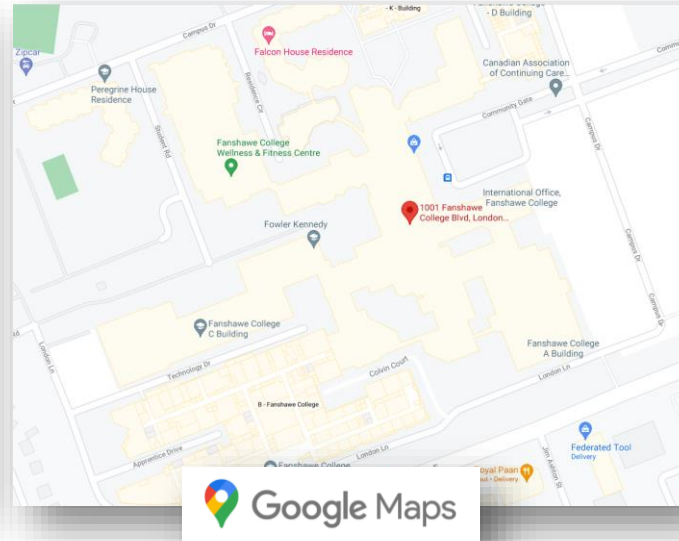
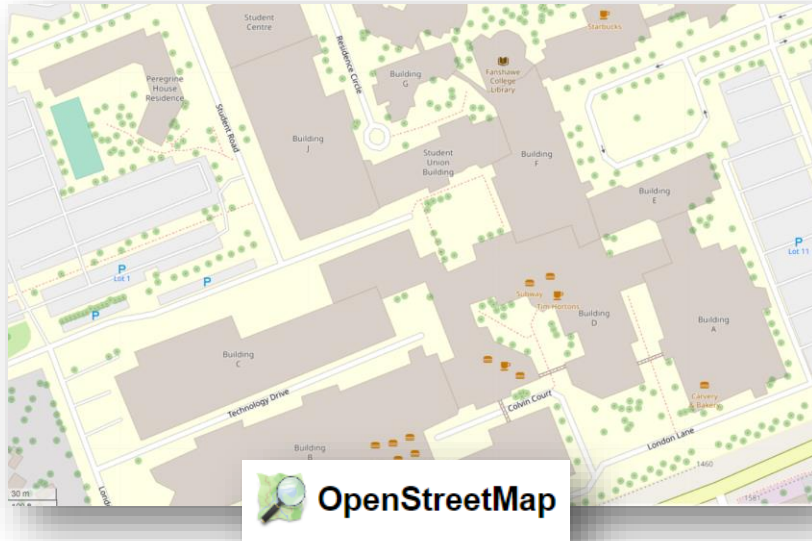
- Leveraging Existing CAD files
  - *AutoCAD layers were used to generate shapefiles*



- *CAD Data After Georeferencing*

# General Background

- Advantages and Benefits?
  - *Accurate campus Basemap*



- *Basemaps*



# General Background

- Advantages and Benefits?
  - *Geospatial File format*



- *Fanshawe college – ArcGIS Pro*

# Fanshawe Use Cases

- **Fanshawe Sustainability App**

*An ArcGIS web map designed to showcase sustainability features located on campus*

# Fanshawe Use Cases

- **Fanshawe Sustainability App**

*An ArcGIS web map designed to showcase sustainability features located on campus*



# Fanshawe Use Cases

- **Fanshawe Sustainability App**

*An ArcGIS web map designed to showcase sustainability features located on campus*



- **Deferred Maintenance Dashboard**

*A Facilities dashboard visualizing deferred maintenance needs for Fanshawe's London campus buildings*

# Fanshawe Use Cases

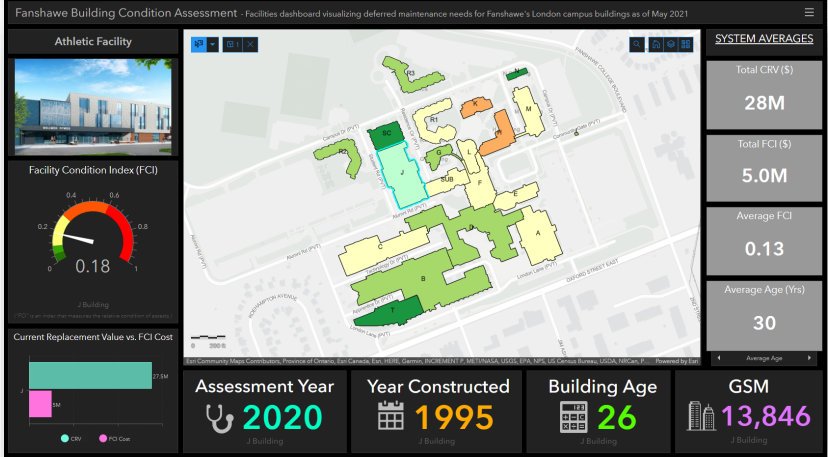
- **Fanshawe Sustainability App**

*An ArcGIS web map designed to showcase sustainability features located on campus*



- **Deferred Maintenance Dashboard**

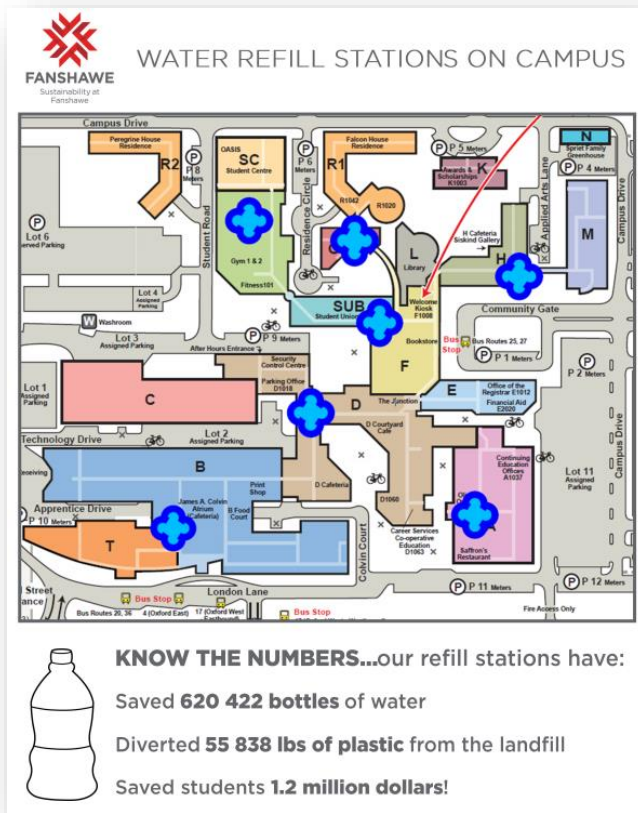
*A Facilities dashboard visualizing deferred maintenance needs for Fanshawe's London campus buildings*



# Use case 1

- Fanshawe Sustainability App

- *An ArcGIS web map designed to showcase sustainability features located on campus*

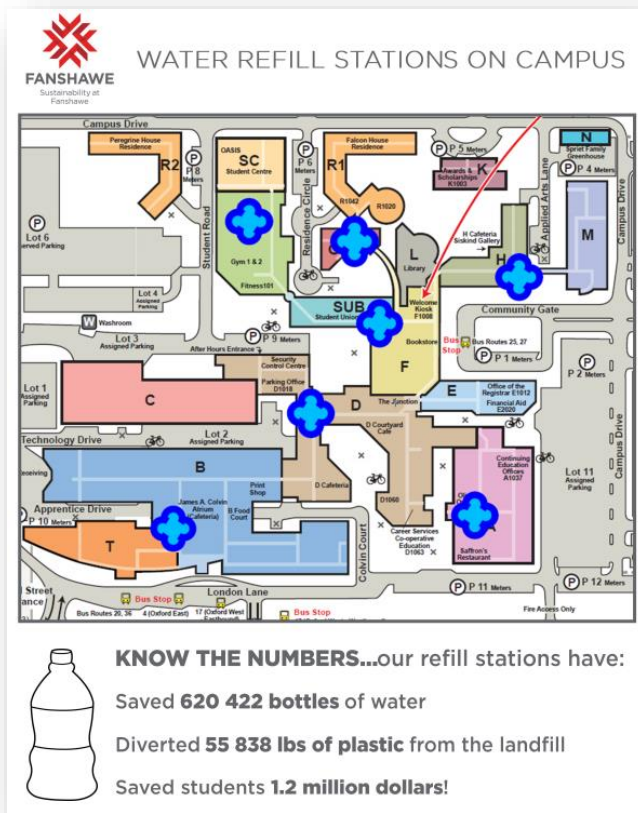


- *The Journey*

# Use case 1

- Fanshawe Sustainability App

- An ArcGIS web map designed to showcase sustainability features located on campus



## Sustainability Catalogue

About Fanshawe > Sustainability > Sustainability Catalogue

### Sustainable Building Features

- Buildings
- Features
- Bike Rack**
  - Bike racks are available for people who choose to bicycle to school or work.
  - Location: B, C, CCPV, D, E, F, H, LDA, LDB, SUB, T, WELLNESS, Y, Z
- Bioswale**
  - Storm water collects in trenches, allowing the water to percolate into the soil. This helps to replenish groundwater sources, decrease pollutants that would otherwise flow into streams, and reduce the burden on municipal storm water systems.
  - Location: R3, SIMCOE CAMPUS
- Building/Construction Material Reuse

### Sustainability

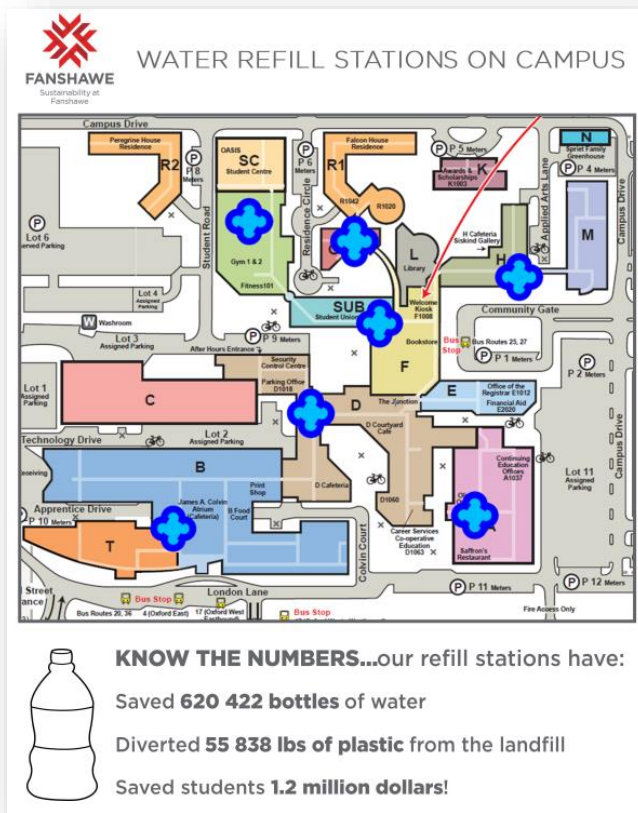
- Our Sustainability Commitment >
- Sustainability Catalogue >
- Waste Management >
- Take Action >
- Events >

- The Journey

# Use case 1

- Fanshawe Sustainability App

- An ArcGIS web map designed to showcase sustainability features located on campus



focus water reduction projects.

Location:  
A, B, C, D, F, G, H, J, K, LDA, LDB, M, N, R1, R2, R3, ST. THOMAS CAMPUS, T, WELLNESS,  
WOODSTOCK CAMPUS, Y, Z

White Roofing

Window to wall ratio

**Sustainability interactive map**

Click below to view a map of the sustainable features found throughout Fanshawe's London Campus, 1001 Fanshawe College Blvd., particularly the hydration/water refilling stations: <https://arcg.is/0zue84>.

Use case 1

Fanshawe Sustainability App

Contact us

[sustainability@fanshawec.ca](mailto:sustainability@fanshawec.ca)

- The Journey



# Use case 1

- Fanshawe Sustainability App

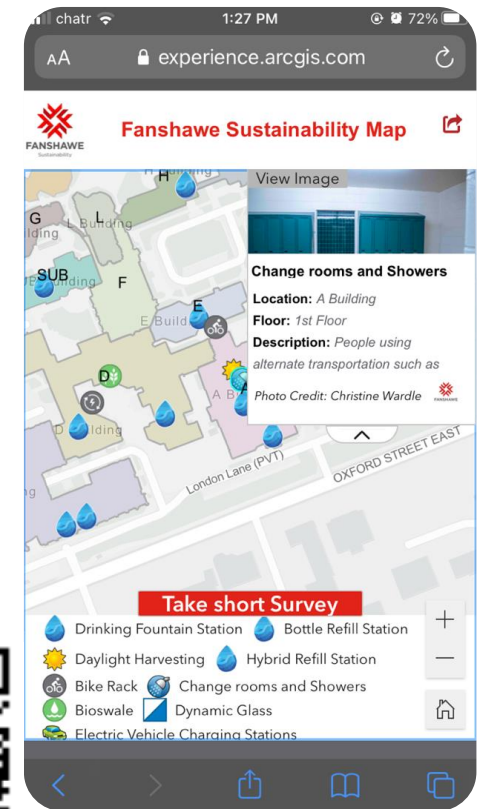
- An ArcGIS web map designed to showcase sustainability features located on campus

- Interactive web map on desktop and Mobile

# Use case 1

- Fanshawe Sustainability App

- An ArcGIS web map designed to showcase sustainability features located on campus

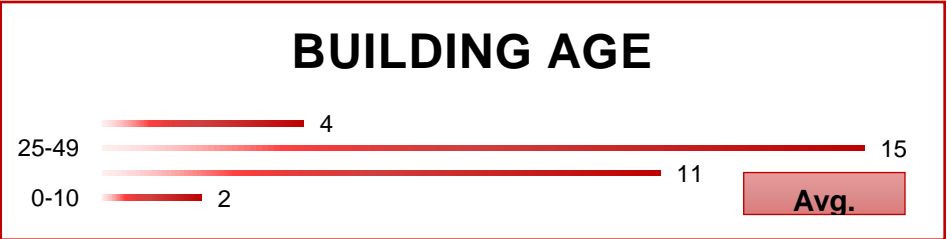
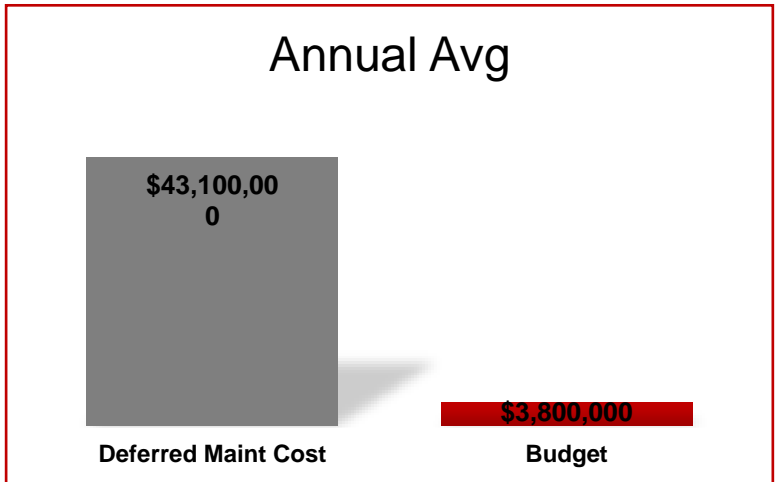
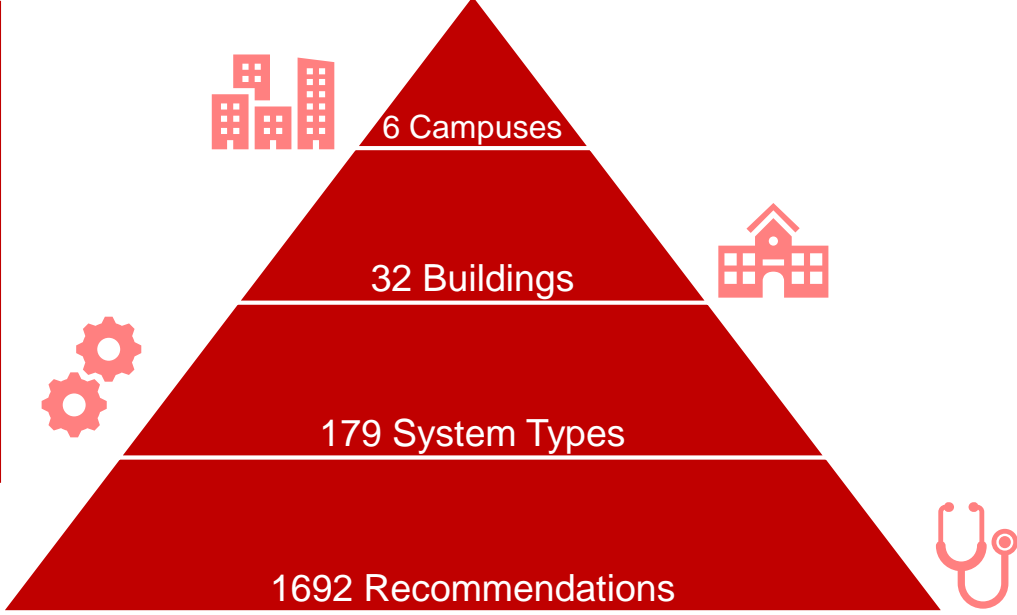
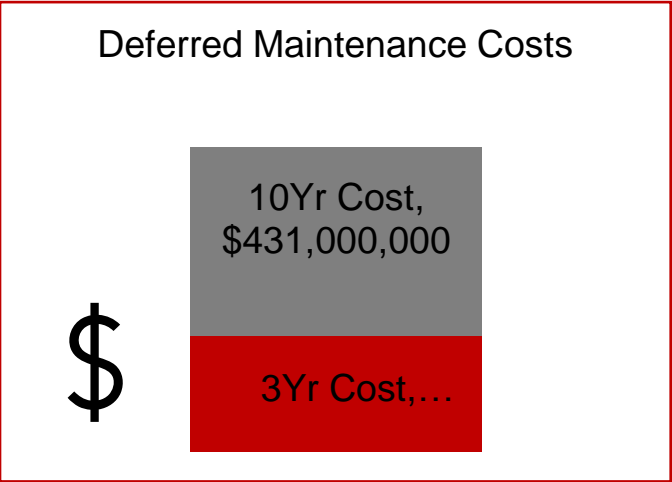


- Interactive web map on desktop and Mobile

# Use case 2

- Deferred Maintenance Dashboard

- A Facilities dashboard visualizing deferred maintenance needs for Fanshawe's London campus buildings



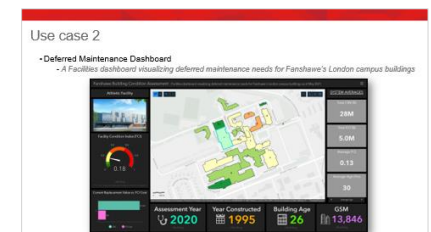
# Use case 2

- Deferred Maintenance Dashboard

- A Facilities dashboard visualizing deferred maintenance needs for Fanshawe's London campus buildings

Action Year	Location	SLAM ID	VFA ID	System	Recommendation Name	Project Type	PID	Est. Cost	Rec. Spend	Comments	Priority Matrix Score	Green Action	Accessibility	Like-Like/Improvement	Complexity/Scale	High Traffic Area	Rating Team Score	Priority score	SYR Plan	Cumm Spend	Building Type	SLAM Plan/Budget
2021	E	12887	REQ-364680	D3 - Heating Auxiliary Equipment	Study: Mechanical Assessment	1P	20-073	\$120,000	\$55,330	Create tender-ready drawings for work to be completed Summer 2022. May require additional space.	9	0	0	0	0	0	40	13	2021/22	\$3,712,684	Academic	FANS FRG2021
2021	E	NEW	NEW	TBC	Repair Cooling System	1P	22-034	\$100,000	\$100,000	Repair or replace cooling system for Network Room E2036. Catastrophic failures since Jan/Feb 2021	12	0	0	0	0	0	10	13	2021/22	\$3,812,684	Academic	
2021	E	12873	REQ-77782	D3 - Air Distribution Systems	HVAC Ductwork Distribution System Renewal	1P	20-073	\$384,606	\$374,870	Move to Summer 2022. VR Report. Central AHU, Exhaust & Renewal of Piping	1	0	0	0	0	0	110	12	2022/23	\$1,493,150	Academic	
2021	E	12889	REQ-364658	D3 - Central AHU	Central AHU - Const Volume - Older Renewal	1P	20-073	\$186,479	\$183,565	Move to Summer 2022. VR Report. Central AHU, Exhaust & Renewal of Piping	6	1	0	0	0	0	59	12	2022/23	\$1,676,715	Academic	
2021	E	12872	REQ-77284	D3 - Heat Pumps	Heat Pump - Water Source - Newer Renewal	1P	20-073	\$470,831	\$470,831	VR Report. Start w/ tender-ready drawings. Possible to coordinate during academic year.	1	0	0	0	0	0	110	12	2022/23	\$2,147,546	Academic	
2021	E	12888	REQ-197221	D3 - Heating Auxiliary Equipment	Heat Exchanger - HW/HW - Shell and Tube Renewal	1P	20-073	\$123,201	\$113,367	Move to Summer 2022. VR Report. Central AHU, Exhaust & Renewal of Piping	2	1	0	0	0	0	99	12	2022/23	\$2,260,913	Academic	
2021	E	12876	REQ-77344	D3 - Kitchen Exhaust Systems	Exhaust System - Kitchen Renewal	1P	20-073	\$39,759	\$83,181	Move to Summer 2022. VR Report. Central AHU, Exhaust & Renewal of Piping	6	0	0	0	0	0	60	12	2022/23	\$2,344,094	Academic	
2021	E	12764	REQ-310950	C3 - Carpet Floor	Carpeting - Aged & Worn 2nd floor	2A	new	\$27,053	\$30,301		8	0	0	0	0	0	15	9.5	2023/24	\$2,403,953	Academic	
2023	E	12505	REQ-303599	C1 - Communal Washroom Refurbishment	Washroom Refurbishment - E1008 Renewal	5W	new	\$42,491	\$42,491		8	0	0	0	0	0	0	8	2024/25	\$1,815,000	Academic	
2024	E	12502	REQ-303596	C1 - Universal / Gender Neutral Washroom Upgrade / Refurbishment	Washroom Refurbishment - E2012	5W	new	\$87,191	\$87,191		8	0	0	0	0	0	0	8	2024/25	\$1,902,191	Academic	
2024	E	12501	REQ-303595	C1 - Communal Washroom Refurbishment	Washroom Refurbishment - E2016 Renewal	5W	new	\$43,595	\$43,595		7	0	0	0	0	0	0	7	2025/26	\$1,612,008	Academic	
2024	E	12503	REQ-303597	C1 - Communal Washroom Refurbishment	Washroom Refurbishment - E2017 Renewal	5W	new	\$42,491	\$42,491		7	0	0	0	0	0	0	7	2025/26	\$1,654,499	Academic	
				C1 - Communal Washroom Refurbishment	Washroom Refurbishment - E1006																	

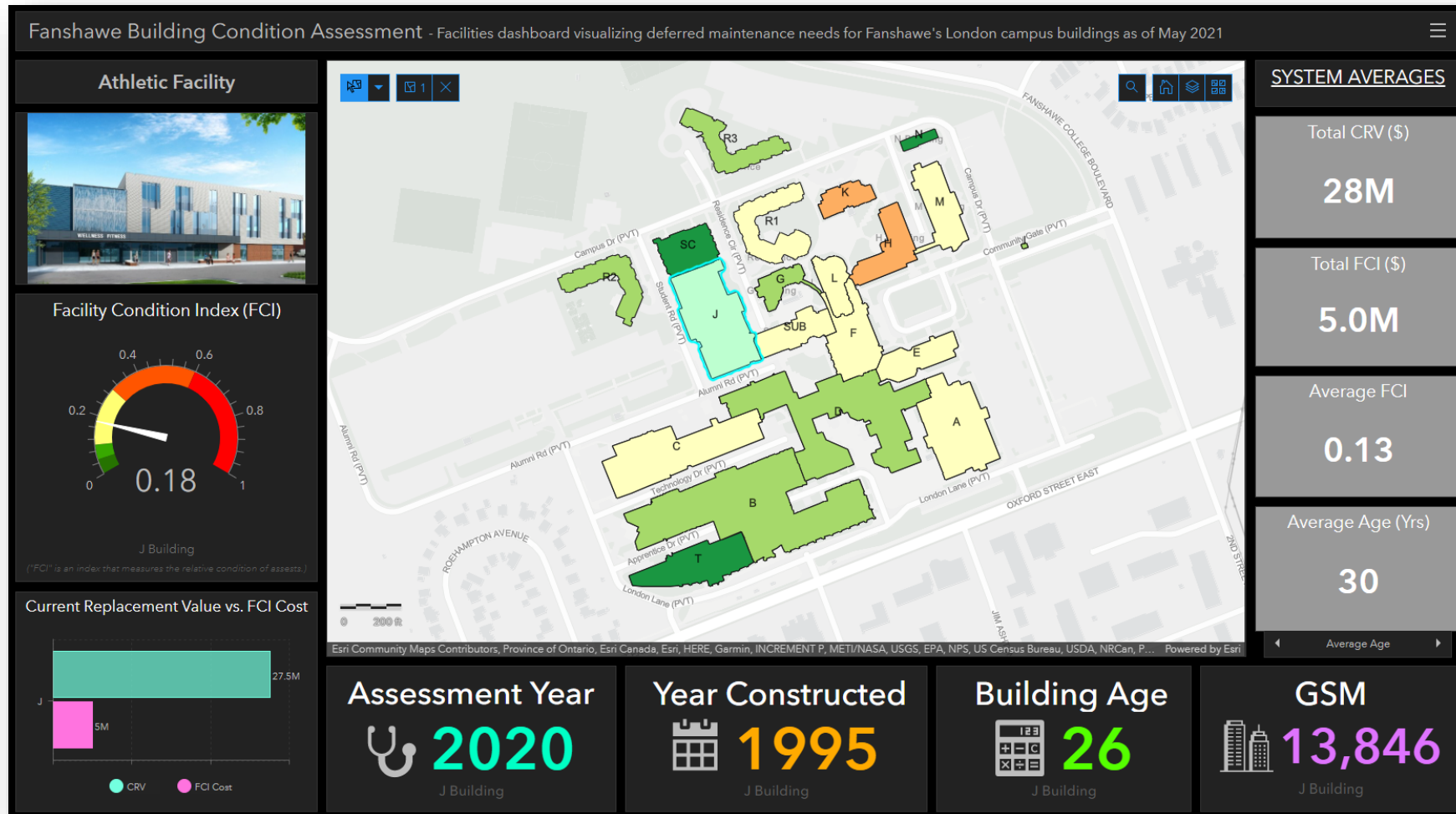
- Spreadsheets, Tables



# Use case 2

- Deferred Maintenance Dashboard

- A Facilities dashboard visualizing deferred maintenance needs for Fanshawe's London campus buildings



- **DEMO**

# “How do I get started?”

1. Get in touch!
2. Community Maps
3. Build a geospatial strategy / road map
4. Focus on high-value, quick wins
5. Leverage existing licenses



# Post Secondary Institutions with access to Esri

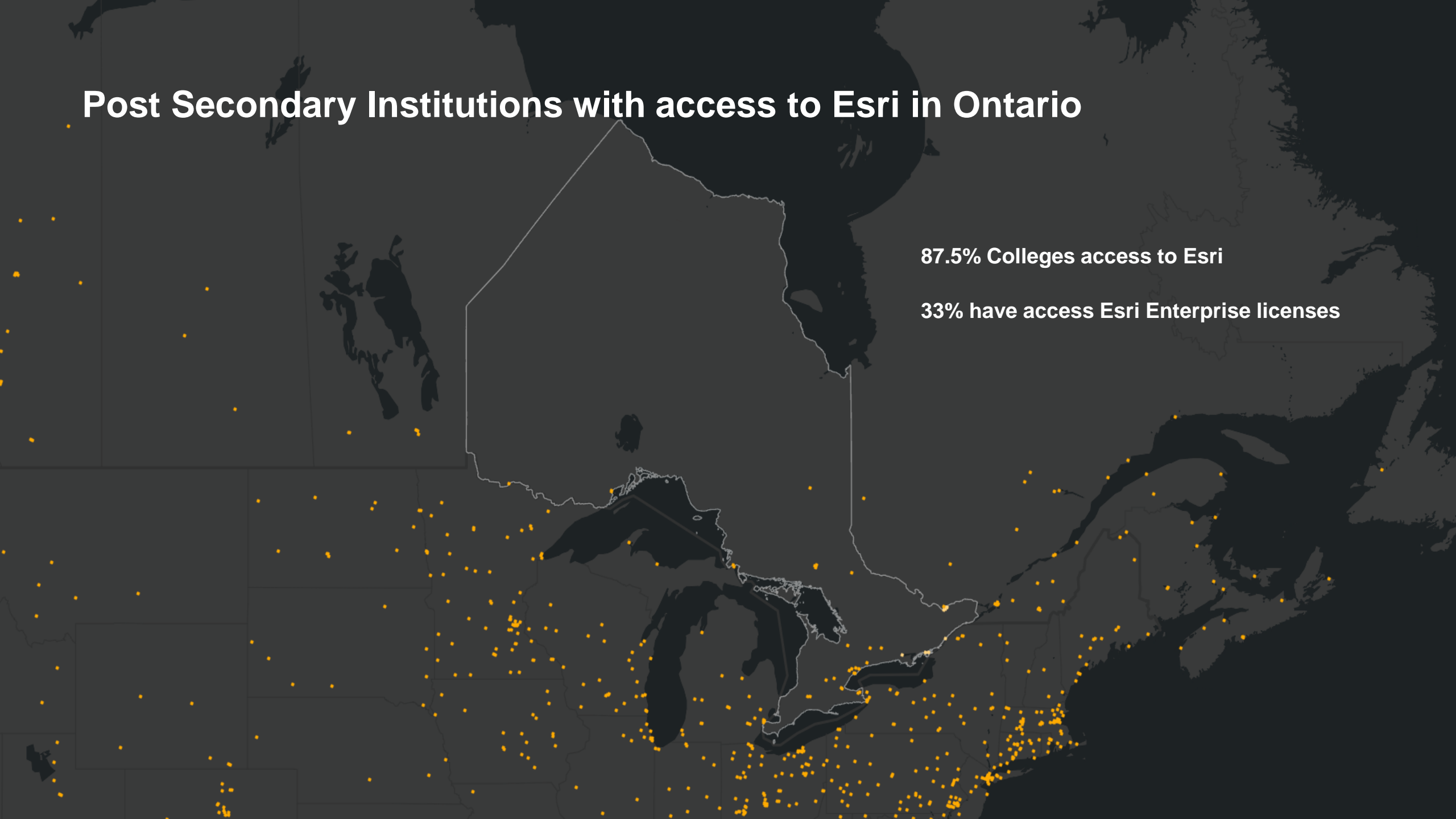




# Post Secondary Institutions with access to Esri in Ontario

87.5% Colleges access to Esri

33% have access Esri Enterprise licenses



# ArcGIS for Campus Operations Resources

- **Getting Started:** *Build Your Geospatial Foundation*
- **Bringing GIS Indoors:** *Space Planning and Optimization*
- **Building a Mobile Workforce:** *Getting Decision Support into the Field*
- **Optimizing Utilities:** *Digitally Transforming Network Management*
- **From CAD to GIS:** *The value of spatially enabling utility and facility information*
- **Configuring Solutions:** *Building information and decision-making tools*
- **Smart Campus Operations:** *Integrating GIS with facility, utility, and space management systems*

# “How do I get started?”

1. Get in touch!
2. Community Maps
3. Build a geospatial strategy / road map
4. Focus on high-value, quick wins
5. Leverage existing licenses



**Thanks, OCFMA!!**

**Iain Greensmith**  
**Account Manager, Education**  
[igreensmith@esri.ca](mailto:igreensmith@esri.ca)

**Samuel Adanyi**  
**Analyst, Facility Information Services**  
[s\\_adanyi@fanshawec.ca](mailto:s_adanyi@fanshawec.ca)



**esri** Canada